

This image provides landscape and visual context only

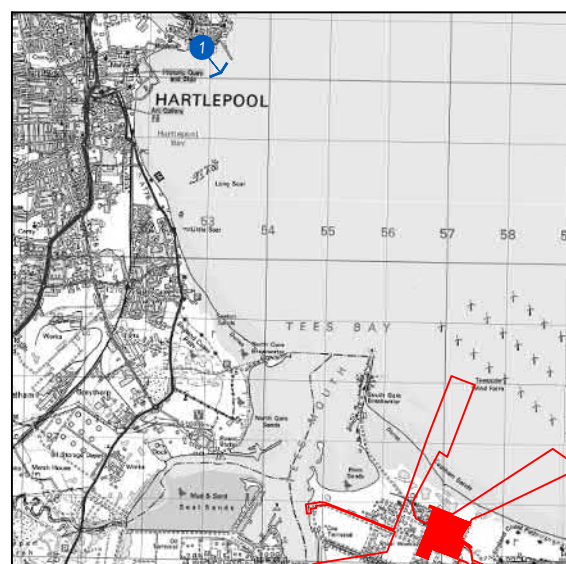
PROJECT  
Net Zero Teesside




---

CLIENT  
NZT Power and NZNS Storage



Extent of 50mm single frame image



-  Location of visual receptor
-  Site Boundary
-  Power Capture and Compressor Site

<b>VIEWPOINT:</b>	1: Albion Terrace, Hartlepool
	Winter
<b>Co-ordinates:</b>	452933, 533502
<b>Distance to site (km):</b>	8.6km PCC
<b>Direction:</b>	South East
<b>Height (m AOD):</b>	11
<b>Date and time:</b>	20/11/2019, 15:26
<b>Camera:</b>	Canon EOS 6D
<b>Lens:</b>	50mm
<b>Camera height (m AGL):</b>	1.6
<b>Focal length/ Field of view:</b>	50mm vertical (27°) x 28mm horizontal (65.5°)
<b>Image size:</b>	144 x 299 mm
<b>Paper size:</b>	297 x 420 mm



**TITLE**

Viewpoint 1- Albion Terrace, Hartlepool

**REFERENCE**

60559231

**Figure 17-7** **DATE**

Sheet Size A3 297 x 420 07/05/2021